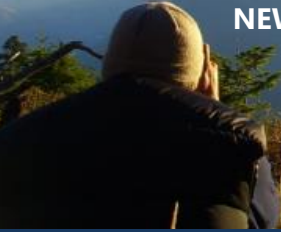




EXPLORING BRITISH COLUMBIA'S
NEWEST **GOLD** BELT



SHARE STRUCTURE

TSX:V - WHN

Outstanding: 88,679,475

Fully Diluted: 97,700,975

Management Ownership: ~38%

Working Capital: ~\$2,800,000

DIRECTORS & ADVISORS

D. Grenville Thomas, P.Eng. – Chairman, Director

Gareth Thomas, B.A. – President, CEO & Director

Victor A. Tanaka, B.Sc, P.Geo. – Director

Shaun Pollard, B.Com, MBA, CMT – CFO, Director

Hannah McDonald, LLB – Director

Ed Balon, P.Geo – Advisor

Peter Fischl, B.Sc, P.Geo – Exploration Manager

WHO?

Respected team of explorationists with a track record of discovery
(Diavik, Polaris, Thor Lake, SBGB)

WHERE?

35,000 hectare land package on underexplored gold belt in Southern British Columbia.

WHY?

Grassroots exploration is the lifeblood of discovery, creating wealth for its investors.

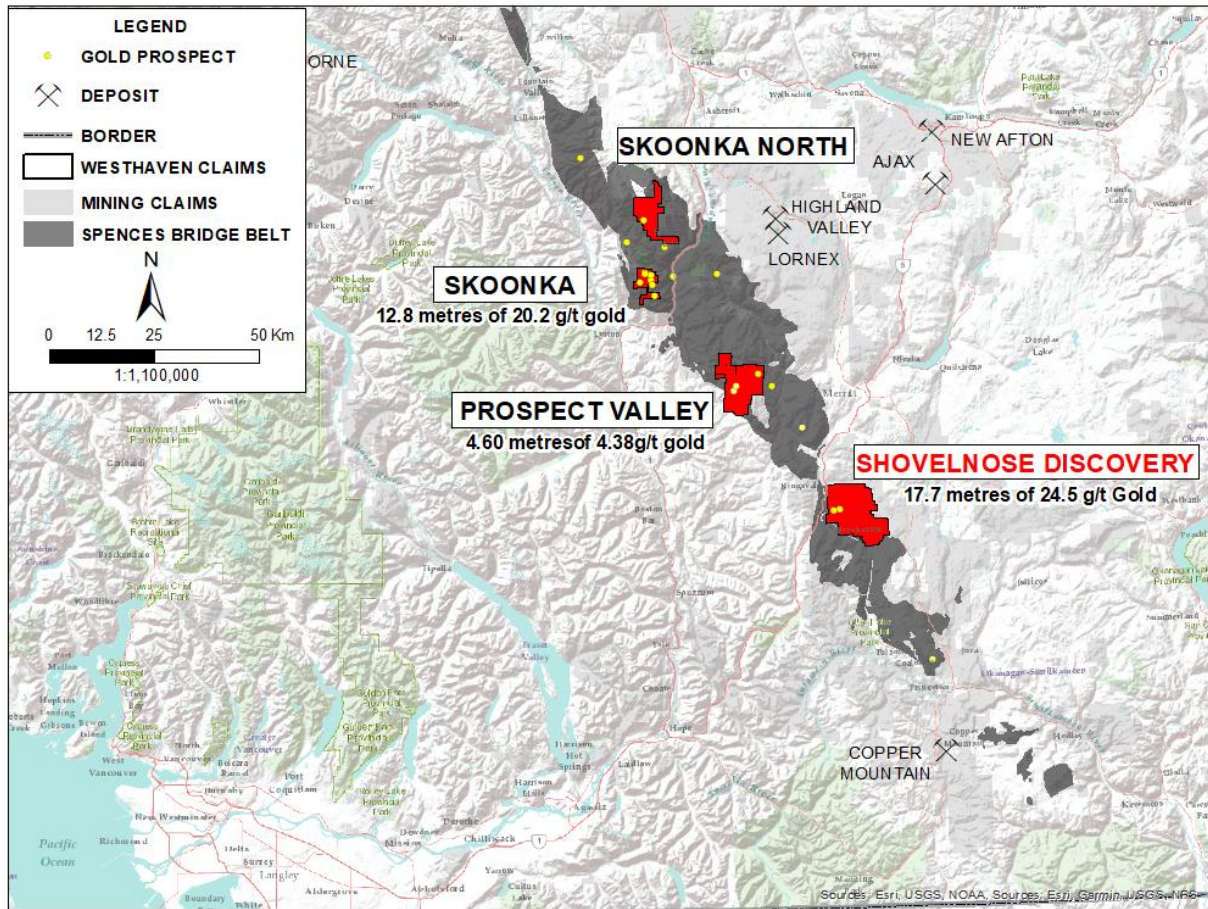


WHY WESTHAVEN?

- Large land package on an underexplored gold belt with district-scale potential – with known gold mineralization throughout the belt.
- ~3,000 metre drill program ongoing at Shovelnose.
- Experienced management and technical team with large equity position (~38%).
- RECENT DRILLING at Shovelnose: SN19-01: 12.66 metres of 39.31 g/t gold and 133.11 g/t silver.

SPENCES BRIDGE GOLD BELT

A 110 km northwest-trending belt of intermediate to felsic volcanic rocks dominated by the Cretaceous Spences Bridge group. These underexplored volcanic rocks are highly prospective for epithermal style gold mineralization.



SHOVELNOSE GOLD (100%)

- 15,542 hectares
- Low-sulphidation epithermal Au-Ag
- Widespread occurrence of gold on the property
- Quartz veins from surface trenching grade up to 66 g/t Au and up to 119 g/t Au and 278 g/t Ag in float
- Drilling: 17.70m of 24.50 g/t Au and 107.92 g/t Ag, including 6.78m of 50.67 g/t Au and 203.54 g/t Ag

SKOONKA GOLD (100%)

- 2,783 hectares
- Low-sulphidation epithermal Au-Ag
- Drilling: 12.8m of 20.20 g/t Au and 14.20 g/t Ag including, 2.90m of 51.10 g/t Au and 46.90 g/t Ag; also including, 0.75m of 117.10 g/t Au and 49.20 g/t Ag

PROSPECT VALLEY GOLD (100%)

- 10,871 hectares
- Low-sulphidation epithermal Au-Ag (Gold-Silver)
- Drilling: 45.70m of 1.57g/t Au including: 4.60m grading 4.38g/t Au and 8.90m grading 2.03g/t Au
- 68.69m of 0.89g/t Au including: 32.64m of 1.32g/t Au and 7.53m grading 2.93g/t Au

SKOONKA NORTH (100%)

- 6,167 hectares (newly staked)
- Highest gold silt samples on the SBGB, including 594 ppb Au, 383.7 ppb Au, and 131.3 ppb Au.

www.westhavenventures.com

info@westhavenventures.com

Tel: (604) 681-5558 fax: (604) 681-5528



1056-409 Granville Street

Vancouver, B.C.

V6C 1T2